



THAMES VALLEY CRICKET LEAGUE



Established in 1972, The Morrant Thames Valley Cricket League is an important component of the ECB Premier League structure

Matthew Stevenson
Hon. Secretary
secretary@tvcricket.com
01628 487516

Sunday, 19th June, 2016

Dear All,

We have received a number of complaints from member clubs recently about the use of illegal laminated bats in TVCL matches. For clarification, lamination is when at least two pieces of wood are glued together to form the blade. It is the glue used in this process that means that the blade does not 'consist solely of wood' and thus makes it illegal as per Law 6 "The Bat".

Please see below a few quick tips for helping to identify these laminated bats. Also, please find attached to this notification a diagram which shows how a laminated bat is put together.

1. They sound very different to a normal bat when striking the ball. Rather than a crisp clear sound they make a softer more thudding sound. The ball also goes 'miles'.
2. You will be able to see a clear line down the edge where the two bits of wood are glued together. This may often be disguised with lots of tape.
3. If you look at the back of the bat (toe and splice) you will see two clear V's where the wood is joined. Manufacturers often try to cover this with stickers but it is usually visible if you look carefully.
4. They will be normally be manufactured outside the UK.

Umpires are advised to make clear to the captains before the toss that laminated bats are illegal. If a player subsequently disregards this warning and uses an illegal bat during a TVCL match then the umpire should ask the batsman to change it immediately and then after the match report the matter to the TVCL Secretary or the D&C Chairman.

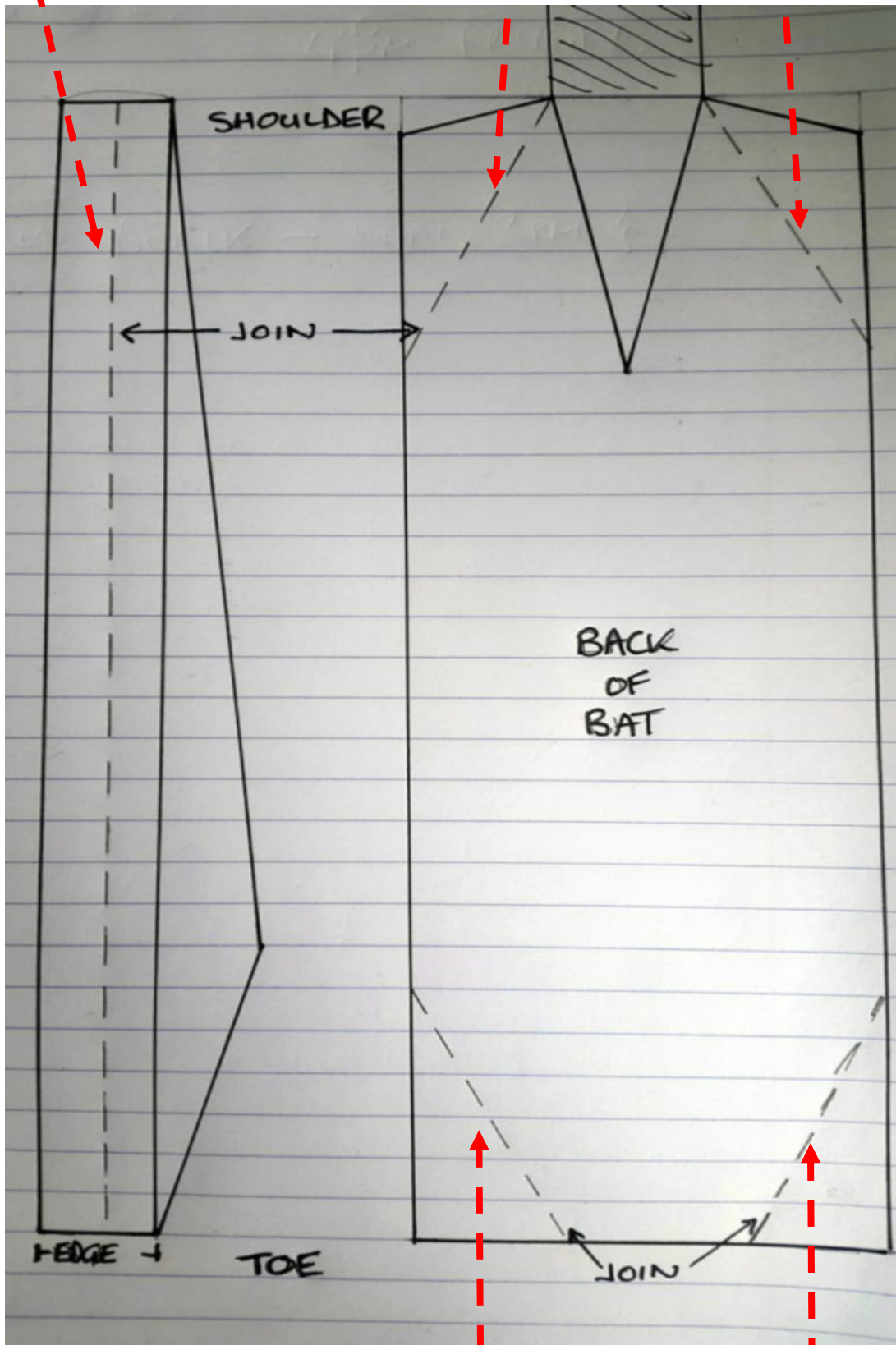
Best wishes,

Matthew Stevenson
Hon.

Secretary

Clear line down the edge

Clear V where the wood is joined



Clear V where the wood is joined